

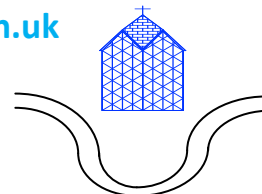
St Paul with St Luke C of E Primary School



School website: www.spsl.towerhamlets.sch.uk

Email: admin@spsl.towerhamlets.sch.uk

Phone: 020 7987 4624



Friday 8th September 2017



Love God, love yourself, love one another

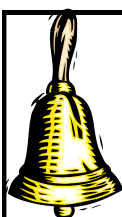
Dear Parents and Carers

Welcome back to an exciting new school year at SPSL. I have been delighted to see how eager and enthusiastic the children are in their new classes with their new teachers and teaching assistants. The staff have worked hard to prepare for the start of term and this week has been very positive.

I encourage you to attend the "Meet the Teacher" meetings next week (see timetable in this newsletter). It is a valuable opportunity for you to meet your child's teacher and find out some important information about your child's learning and how you can help this year.

I look forward to meeting you and talking to you over the next few weeks.

Best wishes
Nicola Horton



School gates open at 8:50am and close promptly at 9:00am. If your child arrives after 9:00am please bring them to the school office and sign them in on our late register.

School finishes at 3:25pm, you must collect your child on time or this is recorded as a late collection. Please inform the school if you will be late to collect your child and also state the reason.

Please ensure your child is always on time.

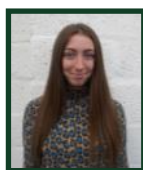
All classes will run 10 minute Maths Meetings every morning from 9:05am until 9:15am.



If your child is absent from school please telephone the school before **9:00am** on **020 7987 4624** and press **option 1** to leave an absence message for the school office. Please make sure you clearly state your **child's name, class and the reason** for their absence.



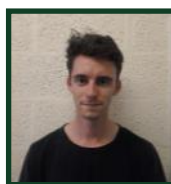
New Staff



Shannon Devlin
Year 1 Class Teacher



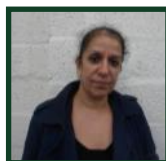
Natalie Wright
Year 2 Class Teacher



Sam Tyler
Year 4 Class Teacher



Jennea Jerdee-Krebbers
Year 5J Class Teacher



Sharon Sandhu
Teaching Assistant



Lutfa Begum
Midday Meals Supervisor



Rubina Chowdhury
Midday Meals Supervisor

THIS WEEK'S RESULTS:

Class	Attendance	Number of Lates
Nursery	82.7%	3
Reception	98.3%	4
Year 1	94.7%	2
Year 2	97.4%	1
Year 3	100%	4
Year 4	98.8%	8
Year 5J	98.8%	2
Year 5K	100%	2
Year 6	100%	2
Overall	97.8%	28



Meet the Teacher

All parents/carers are invited to attend!

Please check the date and time to meet your child's class teacher below.

DATE	CLASS	TIME & LOCATION
Tuesday 12 th September	Year 6	3:40pm in Year 6 classroom
Wednesday 13 th September	Year 3 Year 4	3:30pm in Year 3 classroom 3:30pm in Year 4 classroom
Thursday 14 th September	Reception Year 2 Year 1	9:00am in Reception classroom 9:00am in Year 2 classroom 3:30pm in Year 1 classroom
Friday 15 th September	Year 5J & Year 5K	3:45pm in Year 5J classroom

The correct school uniform is...

- ✓ White shirt/polo shirt or House Team Colours (Yellow, Blue, Green or Red)
- ✓ Navy or grey trousers, skirts, leggings, dresses, tights
- ✓ Plain black shoes
- ✓ White socks
- ✓ Plain black or grey headscarf (if worn)
- ✓ No Jewellery (except small stud earrings)
- ✓ No make up (including nail varnish)

PE KIT

- House team colour t-shirt (yellow, blue, green or red)
- Plain black / navy shorts
- Hair ties for children with long hair
- Pumps and trainers for outdoor games



Items containing the school logo are available from the school office every Monday from 3:30pm – 4:00pm

- *Book bag - £3.50
- *House team colour t-shirts - £4.50
- *Jumper - £6.50
- *Cardigan - £8.50
- *Fleece - £10.00

Voluntary Building Maintenance Fund

As a Voluntary Aided Church School, we do not receive financial support from the council for Capita/Building Projects. Therefore, the London Diocesan Board for Schools asks for the contributions every academic year.

This payment will help to improve the learning environment e.g. new iPads and cover the costs of maintaining the school building.

Please pay as soon as possible.

Write your child's full name on an envelope with their class and the amount. Then hand to the school office to get a receipt.

- 1 child = £27**
- 2 children = £50**
- 3 children = £75**
- 4 children (or more) = £100**

Please remember to check the diary dates weekly. (Changes might apply).

Diary Dates:

Monday 18th September - Friday 22nd September - Values Week

Friday 22nd September - Year 6 Class Assembly

Friday 29th September - Year 5K Class Assembly

Monday 2nd October - Friday 6th October - Year 6 Residential visit at Hautbois in Norfolk

Friday 6th October - Year 5J Class Assembly

Friday 13th October - Year 3 Class Assembly

Monday 23rd October - Friday 27th October - Half Term Holidays (school is closed)

Monday 30th October - All pupils are back in school

Friday 10th November - Reception Class Assembly

Monday 13th November - Friday 17th November - Anti-Bullying Week

Friday 17th November - Nursery Class Assembly

Friday 24th November - Year 4 Class Assembly

Friday 1st December - Year 6 Class Assembly

Wednesday 20th December - Christmas Service/Nativity performed by Year 1 & Year 2 - 9:30am - St Paul's Church, Bow Common. All parents/carers are welcome.

Thursday 21st December - Tuesday 2nd January 2018 - Christmas Holidays (school is closed)

Wednesday 3rd January - All pupils are back in school

Monday 12th February - Friday 16th February - Half Term Holidays (school is closed)

Monday 19th February - All pupils are back in school

Friday 30th March - Friday 13th April - Easter Holidays (school is closed)

Monday 16th April - All pupils are back in school

Monday 7th May - Bank Holiday (school is closed)

Tuesday 8th May - All pupils are back in school

Monday 28th May - Friday 1st June - Half Term Holidays (school is closed)

Monday 4th June - All pupils are back in school

Friday 15th June - Eid Closure (school is closed)

Monday 23rd July - Inset Day (school is closed)

Tuesday 24th July - Inset Day (school is closed)

Tuesday 25th July - Start of Summer Holidays (school is closed)

Parent Coffee Morning



Every Friday

All parents/carers welcome

9:00am - 10:30am

Father Duncan Ross Room

After School Clubs

News coming soon...

Watch this space!

CLASS ASSEMBLIES

Usually take place on a **Friday** from **9:15am** in the **School Hall**.

Please check the diary dates for your child's class assembly. Parents/carers are welcome. *To avoid any disruption, please ensure you are on time.*

Breakfast Club

There are still places available for pupils in Reception—Year 6!

To register please contact the school office.