

IMPORTANT DATES: School term dates 2017/18

AUTUMN TERM 1

School starts: Wednesday 6th September — Rec-6
Nursery will have staggered start dates
Half term starts : Monday 23rd October
Half term ends: Friday 27th October

AUTUMN TERM 2

School starts: Monday 30th October
Term ends: Wednesday 20th December
*Christmas Holidays - Thursday 21st December until
Tuesday 2nd January 2018*

SPRING TERM 1

School starts: Wednesday 3rd January 2018
Half term starts: Monday 12th February
Half term ends: Friday 16th February

SPRING TERM 2

School starts: Monday 19th February
Term ends: Thursday 29th March
Easter Holidays - Friday 30th March until Friday 13th April

SUMMER TERM 1

School starts: Monday 16th April
Half term starts: Monday 28th May
Half term ends: Friday 1st June

SUMMER TERM 2

School starts: Monday 4th June
Year ends: Tuesday 24th July
Start of Summer Holidays - Wednesday 25th July

SCHOOL CLOSURES:

Monday 7th May - Bank Holiday
Friday 15th June - Eid Closure
Monday 23rd July - INSET Day
Tuesday 24th July - INSET Day

BANK HOLIDAYS 2017/2018

Monday 25th December - Christmas Day
Tuesday 26th December - Boxing Day
Monday 1st January 2018 - New Year's Day
Friday 30th March - Good Friday
Monday 2nd April - Easter Monday
Monday 7th May - Early May Bank Holiday
Monday 28th May - Spring Bank Holiday

CLASS ASSEMBLY:

Friday 10th November 2017

Starts at 9:20am in the School Hall

Events at St Paul's Church, Bow Common. All
parents/carers are welcome!

Wednesday 4th October - Harvest Service - 9:30am

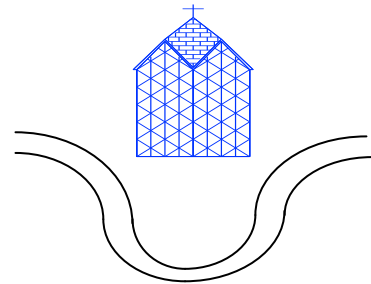
Wednesday 20th December - Christmas Service/Nativity
performed by Year 1 & Year 2 - 9:30am

Autumn Term

Early Years Foundation Stage

Reception

Ms Jackie Proctor



A day in Reception

9:05am-9:15am Maths meeting
9:15am-9:40am Assembly
9:45am-10:00am Mathematics
input
10:00am-10:30am Child initiated
learning inside/outside
10:30am-11:00am Child initiated
learning outside
11:00am-11:30am Read Write Inc
11:55am-12:00pm Get ready for
lunch
12:00pm-1:00pm Lunch
1:00pm-1:15pm Literacy input
1:15pm-2:30pm Child initiated
learning inside and out and
group work
2:30pm-3:00pm Library, Music,
PSHCE, PE
3:00pm-3:25pm story, going
home song, prayer

Love God, love yourself, love one another

St Paul with St Luke

Primary School

Leopold Street

London

E3 4LA

020 7987 4624

Literacy

In EYFS we are concentrating on the topic of 'All about me'. We will be talking about different stages in our lives and looking at pictures of us as a baby. We will be labelling the body and thinking about the importance of healthy eating and exercise.

The books we will read this term are:

Titch

Owl babies

Funny bones

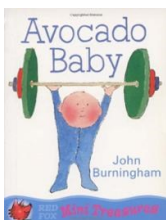
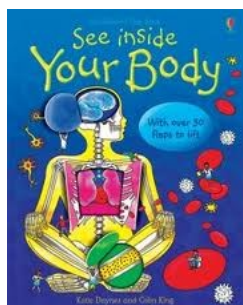
My 5 senses

Avocado baby

Its ok to be different
and other Body Books

The Nativity Story

These books will be our basis for our learning inside and outside the classroom, they will also be the basis to our topics and other activities we will have set out daily. The activities will be linked directly to the children's likes, dislikes and needs.



Mathematics

This year we are starting Mathematics Mastery in Reception. The MM approach believes success in mathematics for every child is possible and mathematical ability is not innate, and is increased through effort. Children will be learning fewer topics in greater depth, mastery for all pupils, number sense and place value come first, problem solving is central. Children will be beginning the year learning about patterns, early numbers and addition and subtraction for numbers with in 6.



Read, Write, Inc.

Most children in Reception will now be starting on the RWI programme. This is the fantastic as this will teach them the sounds so that they are able to start reading. Therefore reading with your child at home or learning the sounds with your child at home will enable them to read. Those children that are not quite ready for RWI are being taught the skills to help them be ready by next half term.

RE

Our RE theme for this term is: Who made the wonderful world? Children will learn what Cristian's believe about creation, everyone is unique and precious, about thankfulness, the Bible and the Church and Harvest.

Other areas of the Early years foundation stage

There are many other areas of learning in the EYFS curriculum including; expressive arts and design, personal social and emotional, understanding the world. These are met in a range of engaging activities such as music, painting, exploring world we live in and working together.

PE

Children will need to bring in PE kits to start PE on the 15th September. Shorts and t-shirts should be provided. Children are part of a house team therefore team coloured t shirts with the school logo can be bought from the office or you can buy coloured t shirts from many supermarkets. PE is last lesson on a Friday therefore children will go home in their kits and these will need to be brought in the following week.

PE : Friday 2:15-3:15

Homework

Homework this year is a 'Learning Log.' Children will be asked to 'show' their learning in whichever way they want to—the more creative the better. We will have a parent **session on....** where this will be explained fully.

Reading Diaries:

Please make sure you read with your child regularly and help support them by making a comment in the Yellow reading diary. Children's books will be changed every **Monday**. Please ensure your child brings their book in.

Your child's reading target is:

To read daily for at least 10 mins (longer if you can!). You can help your child achieve their target by checking they are reading every-day and making a note in their Yellow reading diary.

Bug club: Your child will be able to access more reading books at home online using the active learn website.

Parent workshops every Thursday 9:00am-9:30am. Everyone welcome!

The first parent workshop will be on **Thursday 21st September** in Reception's classroom. Please come along and join in with your child.

