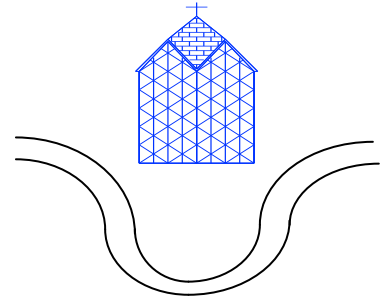


Autumn Term

Once Upon A Time.....

Name of Class: Year 1

Name of Teacher: Miss Devlin



IMPORTANT DATES: School term dates

2017/18

AUTUMN TERM 1

School starts: Wednesday 6th September — Rec-6

Nursery will have staggered start dates

Half term starts : Monday 23rd October

Half term ends: Friday 27th October

AUTUMN TERM 2

School starts: Monday 30th October

Term ends: Wednesday 20th December

*Christmas Holidays - Thursday 21st December until
Tuesday 2nd January 2018*

SPRING TERM 1

School starts: Wednesday 3rd January 2018

Half term starts: Monday 12th February

Half term ends: Friday 16th February

SPRING TERM 2

School starts: Monday 19th February

Term ends: Thursday 29th March

Easter Holidays - Friday 30th March until Friday 13th April

SUMMER TERM 1

School starts: Monday 16th April

Half term starts: Monday 28th May

Half term ends: Friday 1st June

SUMMER TERM 2

School starts: Monday 4th June

Year ends: Tuesday 24th July

Start of Summer Holidays - Wednesday 25th July

SCHOOL CLOSURES:

Monday 7th May - Bank Holiday

Friday 15th June - Eid Closure

Monday 23rd July - INSET Day

Tuesday 24th July - INSET Day

BANK HOLIDAYS 2017/2018

Monday 25th December - Christmas Day

Tuesday 26th December - Boxing Day

Monday 1st January 2018 - New Year's Day

Friday 30th March - Good Friday

Monday 2nd April - Easter Monday

Monday 7th May - Early May Bank Holiday

Monday 28th May - Spring Bank Holiday

Events at St Paul's Church, Bow Common. All
parents/carers are welcome!

Wednesday 4th October - Harvest Service - 9:30am

Wednesday 20th December - Christmas Service/Nativity
performed by Year 1 & Year 2 - 9:30am

A day in Year 1

9:00am-9:15am	Maths meeting
9:15am-9:40am	Assembly
9:40am-10:30am	Maths
10:45am-11:00am	break
11:00am-11:45am	RWI
11:45am-12:15pm	Literacy
12:15pm-1:15pm	Lunch
1:15pm-2:15pm	RE/ICT/Topic/ Science/PE
2:15pm-2:45pm	Playtime
2:30pm-3:20pm	Handwriting/ Music/Story time
3:25pm	Home time

Love God, love yourself, love one another

**St Paul with St Luke
Primary School
Leopold Street
London
E3 4LA
020 7987 4624**

RWI



Year 1 will be continuing to follow the RWI programme. This incorporates phonics, reading and writing. Your child will be in a focused group and will be taking books or work home that they have been working on in their group.

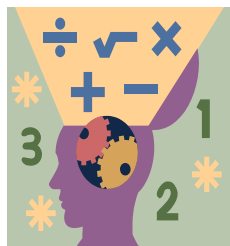
Literacy

Year 1 will be partaking in whole class literacy. The children will explore different genres of reading and writing linked to their topic learning. This will include, poetry, fiction and non-fiction units.

Numeracy

In Numeracy we will be following the Maths Mastery scheme. A core belief scheme is that Mathematics Mastery schools want to ensure that their aspirations for every child's mathematics success become reality.

Opportunities are provided throughout Mathematics Mastery for pupils to use reasoning skills to make connections between prior knowledge and newly presented material. These connections will help foster a deeper understanding of the maths concepts.



This half term we will be focussing on,

- Numbers within 10
- Addition and subtraction within 10
- Shapes and patterns

Next half term we will be focussing on,

- Numbers within 20
- Addition and subtraction within 20

Topic

Our Topic is 'Once Upon a Time'. We will be learning about all things fairy tale. We will explore different fairy tales through fun hands on experiences including making maps of far away lands and spells and potions. We will then go from imaginary princes and princesses to learning about our own Queen and the royal family. We will make crowns and explore family trees. We will also be going on some exciting trips linked to our Topic learning.

Science

In Science we will be investigating Animals including humans. We will be learning about different parts of our bodies. We will explore our senses through hands on investigations. We will be learning about animal body parts and what animals eat. We will use our knowledge of animal body parts to create our own mythical animals.

RE

Our RE theme for this term is: 'What is it like to live as a Jew?'. We will learn about Jewish symbols and places of worship. We will learn about the Jewish community and make comparisons between other religions we have learnt about. We will gain understanding of other faiths and cultures as well as reflect on our own beliefs and what is important to ourselves and others.

PE

P.E will be every Monday. We are incredibly lucky to have a specialist sports coach who will be working with the children this term.

Please ensure that your child brings their full PE (including appropriate footwear) so that they are able to participate!

Homework:

RWI homework is phonics based, and the children may have a special book to read or may need to practise their sounds.

These books are very expensive so please help your child to take great care of them. If lost, you will need to buy a replacement.

Homework this year is a 'Learning Log.' Children will be asked to 'show' their learning in whichever way they want to—the more creative the better.

The learning Logs will also outline the children's maths learn its and high frequency words for that week. Please ensure that your child is practicing these at home.

Children should hand their homework in every **Thursday** so that new homework can be sent home on Fridays.

Reading Diaries:

Please make sure you read with your child regularly and help support them by making a comment in the yellow reading diary.

Your child's reading target is:
To read daily for between 20-30 mins (longer if you can!).

You can help your child achieve their target by checking they are reading everyday and making a note in their yellow reading diary.

Please ensure that your child brings their book bag to school every day so that we can keep track of reading and change books each week.

