

Important Dates:

School term dates 2015/16

AUTUMN TERM

School starts Thursday 3rd September 2015
Half-term starts Monday 26th October 2015
Half-term finish Friday 30th October 2015
Term ends Friday 18th December 2015

SPRING TERM

School starts Monday 4th January 2016
Half-term starts Monday 15th February 2016
Half-term finish Friday 19th February 2016
Term ends Thursday 24th March 2016

SUMMER TERM

School starts Monday 11th April 2016
Half term starts Monday 30th May 2016
Half term finish Friday 3rd June 2016
Term ends Friday 22nd July 2016

Inset Days 2015/16

Tuesday 1st September 2015
Wednesday 2nd September 2015
Monday 14th September 2015
Friday 2nd October 2015
(1 more Pupil inset day to be confirmed)

Eid (approximate) 2015/16

Eid Al-Ada – Thursday 24th September 2015
Start of Ramadan – Monday 6th June 2016
Eid Al-Fitr – Thursday 7th July 2016

Bank Holidays 2015/16

Christmas Days - 25th & 26th December 2015
New Year's Day - Friday 1st January 2016
Good Friday - Friday 25th March 2016
Easter Monday - Monday 28th March 2016
May Bank Holiday - Monday 2nd May 2016
Spring Bank Holiday - Monday 30th May 2016

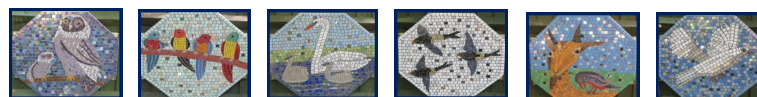
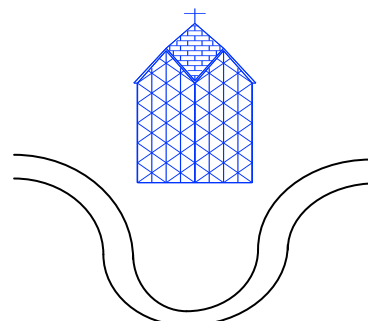
**Nursery Class Assembly:
16th November 2015**

Autumn Term 2015

Early Years Foundation Stage

Nursery

Samirah Adam



A day in Nursery

8.50 -9.00 Register
9.00-9.15 Maths Carpet Session
9.15-10.00 Learning through Play
10.00-10.15 Phonics
10.15 -11.25 Learning through Play
11.30-11.45 Literacy Carpet Session
12.00-1.00 Lunch
1.00-1.20 Carpet Session
1.20-2.50 Learning Through Play
2.50-3.00 Tidy up time
3.00-3.20 Learning Talk
3.25 Home time

**St Paul with St Luke
Primary School
Leopold Street
London
E3 4LA
0207 987 4624**

In EYFS we are concentrating on teaching all areas of the curriculum through a system of core books. These are books specifically chosen to enrich the children's vocabulary.



Literacy

We will be having lots of fun exploring different aspects of these books through writing, reading, art and role play activities.



This term the children will be concentrating on recognising

their names. Please encourage them to find their name and to use your home learning packs!

In Phonics, we are learning all about listening in our environment as well as learning rhymes and musical rhythms! We will encourage the children to use the Read Write Inc. frieze to find the letters in their names. These have a range of pictures which help the children to learn to recognise the letters.



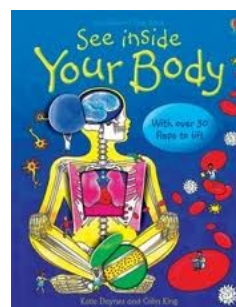
Mathematics

We will be using our Core Books to help us with our learning in mathematics too! Children will be counting and sorting objects, using this as an opportunity to see how many they have altogether. We will be using numbers and counting in lots of different areas of our learning. The children will begin to learn 2D shapes and will be encouraged to look for shapes in the environment!

Other areas of learning

There are many other areas of learning in the EYFS curriculum including; singing, role play, drawing and painting, climbing, running, cutting, sticking, playing with small world toys such as farm animals and train sets.

We strongly encourage every child to take part in every area of the curriculum.



Look out for parent events in Nursery!



To help encourage your child to continue their learning at home we will be sending home a Home Learning pack. These activities will support your child's learning and help them to become ready to read and write as well as count.

Please complete the Learning Log homework with your child each week.

Please continue to enjoy books at home with your child - we really value the time you share as it supports your child's learning.



we value the time you supports child's