

Important Dates:

School term dates 2015/16

AUTUMN TERM

School starts Thursday 3rd September 2015
Half-term starts Monday 26th October 2015
Half-term finish Friday 30th October 2015
Term ends Friday 18th December 2015

SPRING TERM

School starts Monday 4th January 2016
Half-term starts Monday 15th February 2016
Half-term finish Friday 19th February 2016
Term ends Thursday 24th March 2016

SUMMER TERM

School starts Monday 11th April 2016
Half term starts Monday 30th May 2016
Half term finish Friday 3rd June 2016
Term ends Friday 22nd July 2016

Inset Days 2015/16

Tuesday 1st September 2015
Wednesday 2nd September 2015
Monday 14th September 2015
Friday 2nd October 2015
(1 more Pupil inset day to be confirmed)

Eid (approximate) 2015/16

Eid Al-Ada – Thursday 24th September 2015
Start of Ramadan – Monday 6th June 2016
Eid Al-Fitr – Thursday 7th July 2016

Bank Holidays 2015/16

Christmas Days - 25th & 26th December 2015
New Year's Day - Friday 1st January 2016
Good Friday - Friday 25th March 2016
Easter Monday - Monday 28th March 2016
May Bank Holiday - Monday 2nd May 2016
Spring Bank Holiday - Monday 30th May 2016

Year 1 Class Assembly:

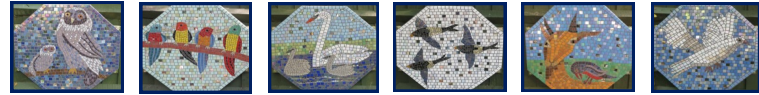
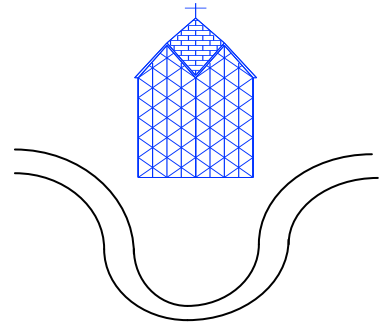
Thursday 1st October 2015

Autumn Term

Once Upon A Time.....

Name of Class: Year 1

Name of Teacher: Megan Brady



A day in Year 1

9:00am - 9:20am	Assembly
9:30am - 10:30am	Numeracy
10:30am - 10:45am	Break
10:50am - 11:50am	RWI
11:50am - 12:15pm	Guided Reading
12:15pm - 1:15pm	Lunch
1:15pm - 2:15pm	RE / ICT / Topic / Science
2:15pm - 2:45pm	Playtime
2:30pm - 3:20pm	Handwriting / PE / Music / Story time
3:25pm	Home time

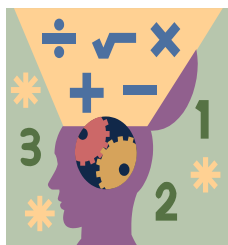
**St Paul with St Luke
Primary School
Leopold Street
London
E3 4LA
0207 987 4624**

Year 1 will be continuing to follow the RWI programme. This incorporates phonics, reading and writing. Your child will be in a focused group and will be taking books or work home that they have been working on in their group.

Numeracy

In Numeracy we will be working on addition and subtraction of numbers to 10. We will also work on multiplication with sets of objects and division by sharing equally among people. We will solve simple problems relating to all 4 of these operations. Children will continue to widen their mathematical language. We will develop problem solving skills through fun hands on mathematical investigations.

You can help to develop your child's mental maths skills by ensuring that children learn their jigsaw numbers to 10 off by heart ($0+10=10$, $1+9=10$, $2+8=10$, $3+7=10$, $4+6=10$, $5+5=10$) and by counting in 5's to 50.



Topic

Our Topic is 'Once Upon a Time'. We will be learning about fairy tales. We will explore different fairy tales through fun hands on experiences including making maps of far away lands and writing spells and potions. We will then go from imaginary princes and princesses to learning about our own Queen and the royal family. We will make crowns and explore family trees. We will end the Topic with a Royal Banquet.

Science

In Science we will be investigating Animals including humans. We will be learning about different parts of our bodies. We will explore our senses through hands on investigations. We will be learning about animal body parts and what animals eat. We will use our knowledge of animal body parts to create our own mythical animals.

RE

Our RE theme for this term is: Special Places. We will be thinking about what makes a place special. We will visit a church and learn why churches are special places for Christians. We will also visit a Mosque and compare these special places.

PE

P.E will be on Tuesday and Friday. We are incredibly lucky to have a specialist sports coach who will be working with the children this term.

Please ensure that your child brings their full PE (including appropriate footwear) so that they are able to participate!

Homework:

RWI homework is phonics based, and the children may have a special book to read or practise their sounds. These books are very expensive so please help your child to take great care of them. If lost, you will need to buy a replacement.

Homework this year is a 'Learning Log.' Children will be asked to 'show' their learning in whichever way they want to—the more creative the better.

New homework will be set every Friday and children will need to return their homework by Thursday the following week. Children who hand in their homework on time will receive 5 points!

Reading Diaries:

Please make sure you read with your child regularly and help support them by making a comment in the Yellow reading diary.

Your child's reading target is: To read daily for between 20-30 mins (longer if you can!). You can help your child achieve their target by checking they are reading everyday and making a note in their Yellow reading diary.

You can help your child develop their comprehension skills by asking them simple questions about what they have read.

