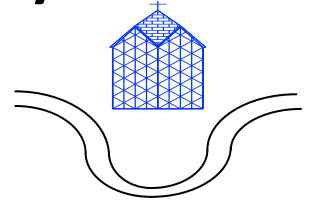


St Paul with St Luke C of E Primary School

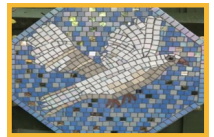
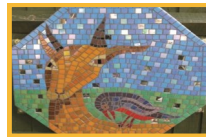
School website: www.spsl.towerhamlets.sch.uk

Email: admin@spsl.towerhamlets.sch.uk

Phone: 020 7987 4624



Friday 16th September 2016



Love God, love yourself, love one another

Dear Parents and Carers,

A reminder about correct school uniform:

- ◆ Please ensure that your child wears the correct shoes to school. Some children are wearing their brightly coloured trainers to school on a day they have PE. They should wear their black school shoes and bring their trainers in their PE bag to change into.
- ◆ Please ensure that your child has a T-shirt for PE that is the colour of the house team they belong to. If you are not sure which house your child is in please ask the office in person or by phone.
- ◆ When it is raining like today, please ensure that your child brings a raincoat. This is especially important now that the autumnal weather is starting.

Our school, like many other schools has less money in the budget than before. It is vital that parents pay the voluntary maintenance contribution each year for their child which helps us to pay for many resources and enables the school to offer a high standard of education and good teachers. Please see over page.

Best wishes

Nicola Horton



Nursery	Sara Outarikt	For settling well into Nursery with a happy smile and no tears.
Reception	Ibrahim Hashmi	Always trying his best to present his work neatly and to a high standard.
Year 1	Roshni Karim	For being an excellent role model for others.
Year 2	Diego Banuelos-Jechiu	Already working so hard to follow our school values and class charter rules.
Year 3	Yusra Ahmed	Growing in confidence and showing great responsibility.
Year 4	Mohammed Tayib Islam	Being very welcoming and making a serious effort in all work.
Year 5	Lenora Shury	Always following our school values and encouraging others to do the same.
Year 6	Zaima Rahman	For being a mature Year 6 student.

HOUSE TEAM POINTS

199	Blyton House	232	Dahl House
237	Donaldson House	201	Rosen House



THIS WEEK'S RESULTS:

Class	Attendance	Number of Lates	Lining up Awards
Nursery	77.8%	3	
Reception	83.9%	3	
Year 1	82.4%	7	2
Year 2	82.9%	2	7
Year 3	82.3%	14	1
Year 4	82.9%	5	3
Year 5	85.1%	5	1
Year 6	82.7%	4	4
Overall	82.6%	43	Well-done Year 2! Keep it up.



Reporting Pupil Absences

Please inform the **school office** before 9am each day your child is absent from school.

If leaving a voicemail, clearly state your **child's full name, class and the reason.**

Breakfast Club

There are still places available for pupils in Reception—Year 6!

To register please contact the school office.



Voluntary Building Maintenance Fund

As a Voluntary Aided Church School, we do not receive financial support from the council for Capita/Building Projects. Therefore, the London Diocesan Board for Schools asks for the contributions every academic year.

This payment will help to improve the learning environment e.g. new iPads and cover the costs of maintaining the school building.

Please pay as soon as possible.

Write your child's full name on an envelope with their class and the amount. Then hand to the school office to get a receipt.

1 child = £27

2 children = £50

3 children = £75

4 children (or more) = £100

MEET JENNY SOYODE

School Home Support

Tuesday 20th September

Time: 9am

Father Duncan Ross Room

All parents/carers welcome!



Please remember to check the diary dates weekly. (Changes might apply).

Diary Dates:

Tuesday 20th September - Parent Coffee Morning - Meet Jenny Soyode (School Home Support Worker)

Friday 23rd September - Year 6 Class Assembly

Friday 23rd September - Parent Coffee Morning (Bring food to share for Eid Parties) - 9am - Father Duncan Ross Room - All parents/ carers welcome

Wednesday 28th September - Individual & Sibling Photographs

Friday 30th September - Year 3 Class Assembly

Friday 30th September - MacMillan Coffee Morning - Please bring money to buy cakes/cupcakes or bring items to the school office to sell (all donations to go towards MacMillan Cancer Research)

Friday 7th October - Year 1 Class Assembly

Friday 14th October - Reception Class Assembly

Friday 14th October - Year 6 Screening

Friday 21st October - Year 2 Class Assembly

Monday 24th October - Friday 28th October - Half Term Holidays - (school is closed)

Monday 31st October - Staff Training (Inset days) - School is Closed

Tuesday 1st November - All pupils are back in school

Friday 11th November - Year 4 Class Assembly

Friday 18th November - Year 5 Class Assembly

Friday 25th November - Nursery Class Assembly

Monday 19th December - Monday 2nd January 2017 - (Christmas Holidays) - School is Closed

Tuesday 3rd January 2017 - All pupils are back in school

Monday 13th February - Friday 17th February - Half Term Holidays - (school is closed)

Monday 3rd April - Monday 17th April - (Easter Holidays) - School is Closed

Monday 1st May - Bank Holiday - School is Closed

Monday 29th May - Friday 2nd June - Half Term Holidays - (school is closed)

Friday 21st July - School finishes at 1:30pm

Violins in SPSL! This week some classes have started learning to play violins. Watch this space...!



After School Clubs

Autumn Term



Confirmation and Waiting List Slips have been sent home today. Please keep note of the club days and make the **full payment** (non-refundable) by **9am on Friday 23rd September.** For further information, please contact the school office.

Parent Coffee Morning

9am - 10:30am

Friday 30th September

Father Duncan Ross Room

All parents/carers welcome!

Notice: **Please bring money to buy cakes/cupcakes or bring items to the school office to sell** (all donations to go towards MacMillan Cancer Research)

WE ARE MACMILLAN. CANCER SUPPORT



School Uniform

Available to purchase from the school office.

Mondays

3:30pm - 4pm

Morning Registration

The registers close at 9am.

Please remember to sign your child in at the office if you arrive in school after 9am.

Nursery School Dinners

We would like to remind nursery parents that school meals cost £1.90 per day (£9.50 per week). Dinner money must be paid in advance weekly, monthly or termly.

If paying weekly, please pay by 9am on a Monday, Tuesday or Wednesday (the latest).