

IMPORTANT DATES: School term dates
2017/18

SPRING TERM 1

School starts: Wednesday 3rd January 2018
Half term starts: Monday 12th February
Half term ends: Friday 16th February

SPRING TERM 2

School starts: Monday 19th February
Term ends: Thursday 29th March
Easter Holidays - Friday 30th March until Friday 13th April

SUMMER TERM 1

School starts: Monday 16th April
Half term starts: Monday 28th May
Half term ends: Friday 1st June

SUMMER TERM 2

School starts: Monday 4th June
Year ends: Tuesday 24th July
Start of Summer Holidays - Wednesday 25th July

SCHOOL CLOSURES:

Monday 7th May - Bank Holiday
Friday 15th June - Eid Closure
Monday 23rd July - INSET Day
Tuesday 24th July - INSET Day

BANK HOLIDAYS 2018

Friday 30th March - Good Friday
Monday 2nd April - Easter Monday
Monday 7th May - Early May Bank Holiday
Monday 28th May - Spring Bank Holiday

CLASS ASSEMBLY:

Friday 9th March 2018
Starts at 9:20am in the School Hall



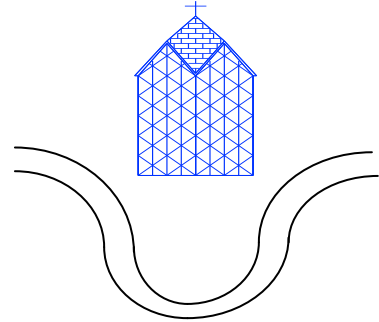
Curriculum

Spring Term

Globe Trotters

Name of Class: Year 1

Name of Teacher: Ms S Devlin



Love God, love yourself, love one another



A day in Year 1

9:00am - 9:15 am	Maths meeting
9:15am - 9:45am	Assembly
9:45 am - 10:45am	Maths
10:45am - 11:00am	Break
11:00am - 11:30am	RWI
11:30am - 12:10pm	Literacy
12:10pm - 1:15pm	Lunch
1:15pm - 2:15pm	RE/ICT/Topic/ Science
2:15pm - 2:45pm	Playtime
2:30pm - 3:20pm	Handwriting/ PE/ Music/Story time
3:25pm	Home time

St Paul with St Luke C of E
Primary School
Leopold Street
London
E3 4LA
020 7987 4624

RWI



Year 1 will be continuing to follow the RWI programme. This incorporates phonics, reading and writing. Your child will be in a focused group and will be taking books or work home that they have been working on in their group.

Literacy

Year 1 will be taking part in whole class literacy lessons. The children will explore different genres of reading and writing linked to their topic learning. This will include, poetry, fiction and non-fiction units.

Maths

We will be continuing the Maths Mastery scheme. The Units that we will be covering this term include...

- Time -

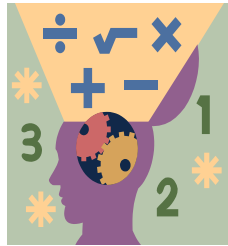
Children will learn to tell the time to the hour and half-past the hour and solve practical problems.

- Exploring calculation strategies using numbers up to 20.

Children will represent and use number bonds, as well as concrete and pictorial representation to solve one-step problems.

- Numbers to 50.

Children will practise counting, reading, writing, identifying and representing in numerals and words.



Topic

Our Topic is *The Globe Trotters* and we will be doing activities relating to travel. We will be learning about different types of transport and why we need them. We will complete surveys about the different transport that we use and represent the data in a range of ways. We will go on an imaginary trip and learn all about another country and write postcards home. We will learn about countries that our families are from and tell our classmates what we have learned. We will be learning to use a globe and finding countries in different continents. We will be going on an exciting trip linked to our topic learning!

Science

In Science we will be working scientifically, finding out about animals, including humans, as well as exploring seasonal changes. We will be looking at our own environment to make comparisons between seasons and predict and explore the effect this has on wildlife.

RE

Our RE theme for this term is 'Why did Jesus Teach the Lord's prayer as the way to pray?' In this topic we will be exploring Christian beliefs and the way we talk to God. In the second half of our term we will be exploring why saints are important and in the lead up to half term we will be learning about why good Friday is good.



PE

P.E will be every Monday. We are incredibly lucky to have a specialist sports coach who will be working with the children this term.

Please ensure that your child brings their full PE (including appropriate footwear) so that they are able to participate!

Homework:

Homework this year is a 'Learning Log.' Children will be asked to 'show' their learning in whichever way they want to—the more creative the better.

Children should hand their homework in every **Wednesday** so that new homework can be sent home on Fridays.

Children may be given phonics homework or handwriting homework this term. Please ensure you support your child in completing these.

Children will be given high frequency words each week. Please ensure that your child is learning these words at home. This will support their fluency in reading and their writing.

Reading Diaries:

Please make sure you read with your child regularly and help support them by making a comment in the yellow reading diary every day. Ensure your child reads Bug Club books on the Bug Club website. Ask Ms Devlin for the login details.



Your child's reading target is:
To read daily for between 20-30 mins (longer if you can!).

You can help your child achieve their target by checking they are reading everyday and making a note in their yellow reading diary.

Please ensure that your child brings their book bag to school every day so that we can keep track of reading and change books each week.

