

IMPORTANT DATES: School term dates 2017/18

SPRING TERM 1

School starts: Wednesday 3rd January 2018

Half term starts: Monday 12th February

Half term ends: Friday 16th February

SPRING TERM 2

School starts: Monday 19th February

Term ends: Thursday 29th March

Easter Holidays - Friday 30th March until Friday 13th April

SUMMER TERM 1

School starts: Monday 16th April

Half term starts: Monday 28th May

Half term ends: Friday 1st June

SUMMER TERM 2

School starts: Monday 4th June

Year ends: Tuesday 24th July

Start of Summer Holidays - Wednesday 25th July

SCHOOL CLOSURES:

Monday 7th May - Bank Holiday

Friday 15th June - Eid Closure

Monday 23rd July - INSET Day

Tuesday 24th July - INSET Day

BANK HOLIDAYS 2018

Friday 30th March - Good Friday

Monday 2nd April - Easter Monday

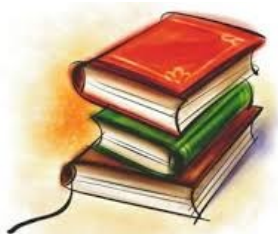
Monday 7th May - Early May Bank Holiday

Monday 28th May - Spring Bank Holiday

CLASS ASSEMBLY:

Friday 9th February 2018

Starts at 9:20am in the School Hall



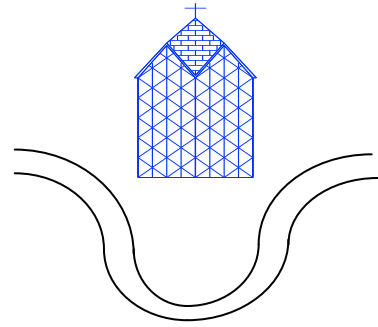
Curriculum

Spring Term 2018

Chocolate

Name of Class: Year 3

Name of Teacher: F. Begum



Love God, love yourself, love one another



A day in Year 3

9:00am - 9:15am Maths meeting

9:20am - 9:45am Assembly

9:25am - 10:30am Maths

10:30am - 10:45am Break

10:45am - 11:30am Reading

11:30am - 12:30pm Literacy

12:30pm - 1:30pm Lunch

1:30pm - 3:25pm Topic/Science/RE

**St Paul with St Luke C of E
Primary School
Leopold Street
London
E3 4LA
020 7987 4624**

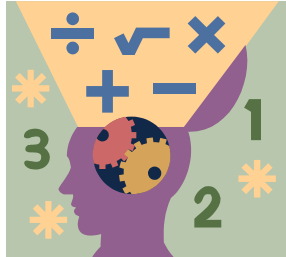
Literacy

Our writing genres for this half term are: character descriptions, diary entries, letters and instructional writing. In class reading we will be reading 'Charlie and the Chocolate Factory' by Roald Dahl. We will be improving our sentences and adding detail to our writing with suitable adjectives.

Maths

In maths we will be working on multiplication and division, money, statistics, length and fractions.

We will continue to develop our mental maths skills through: chanting and practising our 2, 3, 4, 5, 6 and 7 times tables.



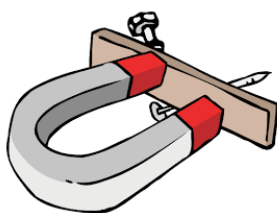
Topic— Chocolate

We will learn where cacao trees are found and the factors affecting their growth. We will find out who first discovered chocolate and who first brought chocolate to Europe. We will learn about the importance of cocoa beans for trade and find out about the ingredients used in chocolate! We will answer various questions such as: does chocolate cause tooth decay? Are chocolate wrappers made from special materials? What is the melting point of chocolate? How can we design a wrapper for our chocolate bar?



Science:

We will explore how forces can make objects start to move, speed up, slow down or change direction. Children will identify that magnets attract some materials and not others and that these are known as magnetic materials. They will learn that some metals, but not all, are magnetic and that all nonmetals are non-magnetic.



RE

Our RE theme for this term is:

Who is Jesus?

Year 3 will be working through the 7 "I am..." statements and their meaning for Christians. They will explore how the "I am..." statements relate to the personal lives of Christians. Children will consider how the meanings behind Jesus' "I am . . ." statements are relevant in our lives.

PE

We will be focusing on invasion games — which involve ball skills such as throwing and catching. Please ensure your child brings in their full PE kit on Tuesday.

PE:

PE is on Tuesday

Homework

Homework this year is the 'Learning Log.' Children will be asked to 'show' their learning in whichever way they want to — the more creative the better. Look out for your child's Learning Log where the method is explained in more detail.

Reading Diaries:

Book changing: **Monday**

Please make sure you read with your child regularly and help support them by making a comment in the Yellow reading diary.

Your child's reading target is: To read daily for at least 30 minutes (longer if you can!).

