

IMPORTANT DATES: School term dates 2017/18

SPRING TERM 1

School starts: Wednesday 3rd January 2018

Half term starts: Monday 12th February

Half term ends: Friday 16th February

SPRING TERM 2

School starts: Monday 19th February

Term ends: Thursday 29th March

Easter Holidays - Friday 30th March until Friday 13th April

SUMMER TERM 1

School starts: Monday 16th April

Half term starts: Monday 28th May

Half term ends: Friday 1st June

SUMMER TERM 2

School starts: Monday 4th June

Year ends: Tuesday 24th July

Start of Summer Holidays - Wednesday 25th July

SCHOOL CLOSURES:

Monday 7th May - Bank Holiday

Friday 15th June - Eid Closure

Monday 23rd July - INSET Day

Tuesday 24th July - INSET Day

BANK HOLIDAYS 2018

Friday 30th March - Good Friday

Monday 2nd April - Easter Monday

Monday 7th May - Early May Bank Holiday

Monday 28th May - Spring Bank Holiday

MEETINGS/ EVENTS:

Wednesday 17th January at 3:30pm

Year 6 Reading meeting in the **Year 6 class-room**

April 9, 10 and 11th

EASTER SCHOOL

Monday 14th—Friday 18th May

SATS WEEK

EDUCATIONAL VISITS:

Monday 12th March

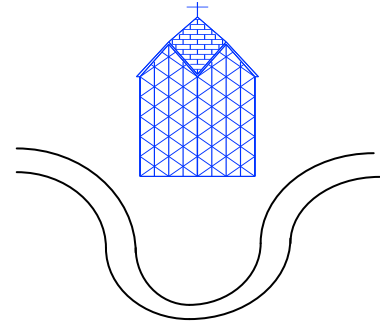
Trip to HQS Wellington

Spring Term 2018

BLITZ AND BLACKOUT

Name of Class: Year 6

Name of Teachers: Lauren Sharpe/
Safia Dimsdale



Love God, love yourself, love one another



A day in Year 6

9:05am - 9:15am	Maths meeting
9:20am - 9:40am	Assembly
9:25am - 10:30am	Maths
10:30am - 10:45am	Break
10:45am - 11:45am	Literacy
11:45am - 12:30pm	Reading
12:30pm - 1:30pm	Lunch
1:30pm - 3:25pm	Topic/Science/PE/RE

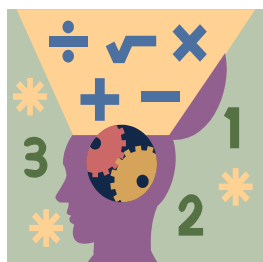
**St Paul with St Luke C of E
Primary School
Leopold Street
London
E3 4LA
020 7987 4624**

Literacy

Our topics for this term are: reading and writing fiction, in particular texts linked to World War Two—Rose Blanche, friend or foe and The Boy In The Striped Pyjamas. We will be having weekly SPAG (Spelling, Punctuation and Grammar) lessons. The children have revision books for these lessons, which may occasionally be sent home for homework.

Numeracy

In Numeracy we will be working on adding and subtracting fractions, as well as multiplying and dividing fractions. We will work on decimals and percentages. In addition we will be working on algebra, measures and ratio. As ever, we will be developing our mental maths skills through regular testing and starter activities. I encourage all parents to practice mental maths with their child at home!



Topic/Science—Blitz and Blackouts

Our topic begins amid air raid sirens and crackly wireless broadcasts. There is camouflage over the windows, netting and soldiers on the ceiling and a sniper's hide in the reading corner. Spitfires take on Messerschmitts overhead & the walls are covered with war propaganda posters. Only the bunting suggests a happy ending. This term is all about the Second World War; what life in wartime London would have been like then & what it means for us now. WWII invades everything we learn about in the Spring not just the obvious historical bits like the Blitz & Churchill, evacuations & the Holocaust. We look at propaganda as a way of persuading people & examine the success of motivational speeches. We read books like 'Rose Blanche' & 'The Boy in the Striped Pyjamas' which are set at the time. Our science involves light, and how we see things. We learn how we are able to see and how the eye works. We look at the war artists and listen to Vera Lynn & the music of 'big bands' so popular at the time.

By the end of term, we will have written poetry descriptions, recounts and reports and planned our own VE Day celebrations through dance & drama.



RE

Our RE theme for this term is: the contemporary Anglican church. We will be learning that there are many different styles of worship within the Anglican Church, from traditional to very contemporary; that Christians choose to worship in a way which best helps them to draw close to God; to explore different ways of drawing close to God, or developing spiritually themselves.



PE

Year 6 will continue to have professional coaches teaching PE. cover all areas of the curriculum throughout the year.

PE Days:

PE is on THURSDAYS.

Homework

Learning Logs continue. Children will be asked to 'show' their learning in whichever way they want to—the more creative the better. Look out for your child's Learning Log where the method is explained in more detail. Year 6 may also get extra homework as we get closer to the SATs.

Please note: **Homework is due on WEDNESDAYS.**

Reading Diaries:

Please make sure you read with your child regularly. We want Year 6 to be reading quality chapter books now. If you need recommendations, please speak to Mrs Sharpe. Your child's reading target is: To read daily for at least 30 mins (longer if you can!). You can help your child achieve their target by checking they are reading everyday and by signing their Yellow reading diary.

