

IMPORTANT DATES: School term dates

2023/24



Autumn term 2023

Term 1	Monday 4th September –Friday 20th October 2023
Half Term	Monday 23rd October—Friday 27th October 2023
Term 2	Monday 30th October—Tuesday 22nd December 2023
Christmas break	Monday 25th December—Friday 5th January 2024

Spring term 2024

Term 3	Monday 8th January –Friday 9th February 2024
Half term	Monday 12th February—Friday 16th February 2024
Term 4	Monday 19th February—Thursday 28th March 2024
Easter break	Friday 29th March —Friday 12th April 2024

Summer term 2024

Term 5	Monday 15th April—Friday 24th May 2024
Half term	Monday 27th May—Friday 31st May 2024
Term 6	Monday 3rd June—Tuesday 23rd July 2024
Summer break:	Wednesday 24th July—Friday 30th August 2024

INSET Days:

Friday 5th January 2024
Monday 17th June 2024

Bank holidays

Tuesday 26th December 2023
Monday 1st January 2024
Friday 29th March 2024
Monday 1st April 2024
Monday 27th May 2024

Autumn Term

Toys Past and Present

OWL CLASS

Name of Teacher: Miss Begum



A day in Year 1

8:30am - 8:45am Spelling/ Handwriting
8:50 am - 9:15am Collective worship
9:15am - 9:45am RWI (Phonics)
9.45am—10.45 Maths
10:45am - 11:00am Break
11:00am - 12:00pm Literacy
12:00-12:10—Maths Meeting
12:10pm -1:15pm Lunch
1:05pm - 1:30pm Yoga
1:30pm - 3:15pm Science/Art/History/
Geography/RE/PSHE/PE
3:15 Home Time

'Love one another as I have loved you'

**St Paul with St Luke
Primary School
Leopold Street
London
E3 4LA
020 7987 4624**



RWI

Year 1 will be continuing to follow the RWI programme.



This incorporates phonics, reading and writing. Your child will be in a focused group and will be taking books or work home that they have been working on in their group.

Literacy

Year 1 will be partaking in whole class literacy. We will be reading the book *Gingerbread Man* by Shirley Hughes for the first half term and *Martha Maps* in our next half term. The children will follow the scheme 'Talk For Writing' to produce story maps and small pieces of writing.

The children will also explore different genres of reading and writing linked to their topic learning. This will include, poetry, fiction and non-fiction units.

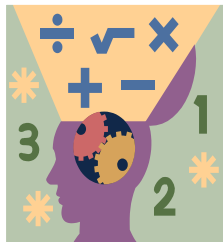
Numeracy

In Numeracy this half term we will be focussing on,

- Place Value
- Addition and subtraction within 10
- Shapes and patterns

Next half term we will be focussing on:

- Numbers within 20
- Addition and subtraction within 20



Topic

Our Topic is 'Toys and Games'. We will share our own favourite toys from home and discuss what makes them special. We will learn about moving toys and how to make them move. We will design and make our very own puppets.

Science

In Science we will be investigating different materials. We will be exploring different types of materials and investigating their properties. We will learn how to observe and sort materials into different groups.

RE

Our RE theme for this term is: 'What is it like to live as a Jew?'. We will learn about Jewish symbols and places of worship. We will learn about the Jewish community and make comparisons between other religions we have learnt about. We will gain understanding of other faiths and cultures as well as reflect on our own beliefs and what is important to ourselves and others.

PE

P.E will be every Wednesday and Thursday. We are incredibly lucky to have a specialist sports coach who will be working with the children this term.

Please ensure that your child brings their full PE kit (including appropriate footwear) so that they are able to participate safely!

Homework

Children will be given Year 1 common exception words, number bonds to 20 to practise at home.

Books will be changed every Thursday.

Your child's reading target is:
To read daily for between 20-30 mins (longer if you can!).

You can help your child achieve their target by checking they are reading everyday and making a note in their yellow reading diary.

Please ensure that your child brings their book bag to school every day so that we can keep track of reading and change books each week.

