



NEWSLETTER W/E 12th July 2024



Dear families,

It has been another fantastic week of learning and activities for our children. Nursery, Reception, Years 1, 2 and 3 have all been out and about this week. Our EYFS visited Victoria Park today, while our KS1 children went to Mile End Park yesterday with Year 3 going to the Maritime Museum and Greenwich Park on Wednesday. All of our children had a wonderful time playing and picnicking in the sun (we were very lucky with the weather!).

You will have seen that your child may have come home with their end of key stage results. These results celebrate the children's achievements, dedication and perseverance in all of their learning. For our Year 6 children, SATS this year have not shown the progress that all of our children have made, due to their SATS being cancelled in Year 2 and therefore no published progress measures have been released by the DFE. We hope that you are as proud of your children as we are.

As we move into our last full week of the school year, the children will be eager to find about their new class teams for next year. Transition can be very nerve-wracking for some of our children and to help with these feelings; children will meet their new class teams from Wednesday to Friday as part of the whole-school transition days.

*Mrs Smith
& Mr Hall*



DIARY DATES

19/07/2024 - International day

23/07/2024 - Last day of school - SCHOOL WILL CLOSE AT 1:30PM.

SCHOOL NOTICE BOARD

Diary dates

Sports day

Nursery & Reception, AM, Monday 15th July

Key Stage 1, PM, Monday 15th July

Lower Key Stage 2, AM, Tuesday 16th July

Upper Key Stage 2, PM, Tuesday 16th July

Transition days

Wednesday 17th July - Friday 19th July

International day

Friday 19th July PM

SCHOOL NOTICE BOARD

Year 3 get nautical

Year 3, Parrot class, had a wonderful time on Wednesday's trip. They took in the sites of the River Thames, The Cutty Sark and Greenwich University before visiting the National Maritime Museum. The children learned lots about the sea before enjoying a picnic and playing in Greenwich Park before walking back under the River Thames (via the foot tunnel) on their way back to school where they enjoyed Ice lollies.



SCHOOL NOTICE BOARD

Loxley Park Adventure: A Well-Deserved Treat for Year 1 and Year 2!

As the school year draws to a close, our enthusiastic Year 1 and Year 2 students celebrated their achievements with a delightful trip to Loxley Park. We are incredibly proud of all our students for their dedication and enthusiasm throughout the year. The memories made at Loxley Park will surely be cherished by everyone.



To top off the day, each child enjoyed a cool, refreshing ice lolly. It was the perfect way to unwind and savor the summer warmth.



The excitement was palpable as the children arrived at Loxley Park, eager to explore and enjoy the day. From climbing frames to swings, slides to sandpits, there was something for everyone. Laughter and cheerful shouts filled the air as the children made the most of every moment, playing games and challenging themselves on the various play structures.

SCHOOL NOTICE BOARD

End of Year Celebration: EYFS Trip to Victoria Park

Our Early Years Foundation Stage (EYFS) students recently capped off a fantastic year of learning through play with an exciting trip to Victoria Park. This end-of-year outing was a well-deserved reward for their hard work and enthusiasm throughout the year.



The day at Victoria Park was filled with joy and laughter as the children explored the park's wonderful play equipment. From adventurous climbs and speedy slides to creative sand play and more, every corner of the park offered new opportunities for fun and discovery. The children's faces lit up with excitement as they played, demonstrating the skills and confidence they have developed over the year.

SCHOOL NOTICE BOARD

In addition to enjoying the equipment, the children also shared a delightful picnic. Sitting together on picnic blankets, the children chatted and giggled, creating lovely memories with their friends and teachers.



We would like to extend a heartfelt thank you to all the parents who volunteered to support us on the trip. Your assistance and enthusiasm were invaluable, and this wonderful day would not have been possible without you.

SCHOOL NOTICE BOARD

ATTENDANCE MATTERS

Our school target is 96%

This week: 88%

**MOMENTS
MATTER,
ATTENDANCE
COUNTS.**

**MOMENTS
MATTER,
ATTENDANCE
COUNTS.**

Our attendance policy is on
our school website.
Paper copies are available
from the office.

You must call the school office before 9am
to report you child's absence or if they will
be late coming to school.

The Attendance Welfare Officer
(AWO) checks our school
registers regularly and will
contact parents by letter,
telephone or a home visit if
there is a cause for concern.
Formal referral of pupils with
persistently less than 90%
attendance may be made. Be
aware that parents can
ultimately be fined or
prosecuted for non-attendance
offences.

Failure to report your child's absence would
result in them getting an unauthorised
absence mark on the register.

Attendance Matters





Every Day Counts....





SCHOOL NOTICE BOARD

| Year | Name |  PUPIL OF THE WEEK  |
|----------|-------------|---|
| Rec | Jasai | For learning all 17 sets of his HFW. |
| | Hazera | For her independent drawings and storytelling using her pictures. |
| Year 1 | Michael | For a positive attitude towards learning. |
| | Waseem | For a positive attitude towards learning |
| Year 2 | Tawhid | For participating in R.E lesson an having the power to not give up. |
| | Ahnaf | For his kind words and contributions in the R.E lesson. |
| Year 3 | Whole class | The whole class for being fantastic on their school trip to the Maritime Museum. |
| Year 4 | Saqeef | For trying to organise his ideas better in his Literacy work. |
| | Amelia A | For being an amazing pupil in class and fantastic learning partner. |
| Year 5 | Zaina | For taking responsibility and always trying her best to catch up following an absence. |
| | Ehsan | For taking initiative and asking question about his learning. |
| Year 6 | Kavell | For his learning and always giving it a try. |
| | Archie | For his enthusiasm and doing some background research on the on the British Monarchs for History. |
| Flamingo | Maria | For following instructions well. |

SCHOOL NOTICE BOARD

International Day at St Paul with St Luke

50p
entrance
fee



Spain



Argentina



USA



Albania

Traditions
Cultural Attire
Fundraising and
Prizes

Friday 19th July 2024
Join us 3pm to 4:30pm



Italy

Food Donations



Performances

Celebration



Morocco



Australia



Brazil



Jamaica

Learning about
other countries
Raffle
Sharing

SCHOOL NOTICE BOARD

International Day at SPSL



Spain

We are excited to announce our upcoming International Day celebration on Friday 19th July, a special event dedicated to embracing and understanding the diverse cultures from around the world. This day promises a mix of activities, food, and cultural displays.



Morocco



Argentina

Each class has been assigned a country and have been enjoying learning all about the country: location, language, climate, culture and traditions. The children have been enjoying making a variety of activities to be shared on the day



Australia

To make this event truly memorable, we are inviting you to contribute to the celebration in the following ways:



USA

1. ****Food Donations****: We encourage each family to donate a dish representative of your child's class country. This can be a national or regional food item, or something as simple as cupcakes decorated in the colours of that country's flag.



Brazil

2. ****Cultural Attire****: We ask that children and adults alike come dressed in traditional clothing or colours that represent your child's class country.

3. ****Fundraising and Prizes****: Each class will have a designated area where their food items will be sold. The class that raises the most money through their food sales will win a special prize.



Albania

Your contributions and participation are crucial to the success of this event. If you have any questions or need further information, please do not hesitate to contact us.



Jamaica

Thank you for your support and enthusiasm. We look forward to celebrating International Day with you and your children!

SCHOOL NOTICE BOARD



Academic Calendar 2024-2025

| September '24 | | | | | | |
|---------------|----|----|----|----|----|----|
| M | Tu | W | Th | F | Sa | Su |
| | | | | | | 1 |
| 2 | 3 | 4 | 5 | 6 | 7 | 8 |
| 9 | 10 | 11 | 12 | 13 | 14 | 15 |
| 16 | 17 | 18 | 19 | 20 | 21 | 22 |
| 23 | 24 | 25 | 26 | 27 | 28 | 29 |
| 30 | | | | | | 19 |

| October '24 | | | | | | |
|-------------|----|----|----|----|----|----|
| M | Tu | W | Th | F | Sa | Su |
| | 1 | 2 | 3 | 4 | 5 | 6 |
| 7 | 8 | 9 | 10 | 11 | 12 | 13 |
| 14 | 15 | 16 | 17 | 18 | 19 | 20 |
| 21 | 22 | 23 | 24 | 25 | 26 | 27 |
| 28 | 29 | 30 | 31 | | | |
| | | | | | | 19 |

| November '24 | | | | | | |
|--------------|----|----|----|----|----|----|
| M | Tu | W | Th | F | Sa | Su |
| | | | | 1 | 2 | 3 |
| 4 | 5 | 6 | 7 | 8 | 9 | 10 |
| 11 | 12 | 13 | 14 | 15 | 16 | 17 |
| 18 | 19 | 20 | 21 | 22 | 23 | 24 |
| 25 | 26 | 27 | 28 | 29 | 30 | |
| | | | | | | 20 |

| December '24 | | | | | | |
|--------------|----|----|----|----|----|----|
| M | Tu | W | Th | F | Sa | Su |
| | | | | | | 1 |
| 2 | 3 | 4 | 5 | 6 | 7 | 8 |
| 9 | 10 | 11 | 12 | 13 | 14 | 15 |
| 16 | 17 | 18 | 19 | 20 | 21 | 22 |
| 23 | 24 | 25 | 26 | 27 | 28 | 29 |
| 30 | 31 | | | | | 15 |

| January '25 | | | | | | |
|-------------|----|----|----|----|----|----|
| M | Tu | W | Th | F | Sa | Su |
| | | 1 | 2 | 3 | 4 | 5 |
| 6 | 7 | 8 | 9 | 10 | 11 | 12 |
| 13 | 14 | 15 | 16 | 17 | 18 | 19 |
| 20 | 21 | 22 | 23 | 24 | 25 | 26 |
| 27 | 28 | 29 | 30 | 31 | | |
| | | | | | | 19 |

| February '25 | | | | | | |
|--------------|----|----|----|----|----|----|
| M | Tu | W | Th | F | Sa | Su |
| | | | | | 1 | 2 |
| 3 | 4 | 5 | 6 | 7 | 8 | 9 |
| 10 | 11 | 12 | 13 | 14 | 15 | 16 |
| 17 | 18 | 19 | 20 | 21 | 22 | 23 |
| 24 | 25 | 26 | 27 | 28 | | |
| | | | | | | 15 |

| March '25 | | | | | | |
|-----------|----|----|----|----|----|----|
| M | Tu | W | Th | F | Sa | Su |
| | | | | | 1 | 2 |
| 3 | 4 | 5 | 6 | 7 | 8 | 9 |
| 10 | 11 | 12 | 13 | 14 | 15 | 16 |
| 17 | 18 | 19 | 20 | 21 | 22 | 23 |
| 24 | 25 | 26 | 27 | 28 | 29 | 30 |
| 31 | | | | | | 20 |

| April '25 | | | | | | |
|-----------|----|----|----|----|----|----|
| M | Tu | W | Th | F | Sa | Su |
| | 1 | 2 | 3 | 4 | 5 | 6 |
| 7 | 8 | 9 | 10 | 11 | 12 | 13 |
| 14 | 15 | 16 | 17 | 18 | 19 | 20 |
| 21 | 22 | 23 | 24 | 25 | 26 | 27 |
| 28 | 29 | 30 | | | | |
| | | | | | | 12 |

| May '25 | | | | | | |
|---------|----|----|----|----|----|----|
| M | Tu | W | Th | F | Sa | Su |
| | | | 1 | 2 | 3 | 4 |
| 5 | 6 | 7 | 8 | 9 | 10 | 11 |
| 12 | 13 | 14 | 15 | 16 | 17 | 18 |
| 19 | 20 | 21 | 22 | 23 | 24 | 25 |
| 26 | 27 | 28 | 29 | 30 | 31 | |
| | | | | | | 16 |

| June '25 | | | | | | |
|----------|----|----|----|----|----|----|
| M | Tu | W | Th | F | Sa | Su |
| | | | | | | 1 |
| 2 | 3 | 4 | 5 | 6 | 7 | 8 |
| 9 | 10 | 11 | 12 | 13 | 14 | 15 |
| 16 | 17 | 18 | 19 | 20 | 21 | 22 |
| 23 | 24 | 25 | 26 | 27 | 28 | 29 |
| 30 | | | | | | 21 |

| July '25 | | | | | | |
|----------|----|----|----|----|----|----|
| M | Tu | W | Th | F | Sa | Su |
| | 1 | 2 | 3 | 4 | 5 | 6 |
| 7 | 8 | 9 | 10 | 11 | 12 | 13 |
| 14 | 15 | 16 | 17 | 18 | 19 | 20 |
| 21 | 22 | 23 | 24 | 25 | 26 | 27 |
| 28 | 29 | 30 | 31 | | | |
| | | | | | | 14 |

| August '25 | | | | | | |
|------------|----|----|----|----|----|----|
| M | Tu | W | Th | F | Sa | Su |
| | | | | 1 | 2 | 3 |
| 4 | 5 | 6 | 7 | 8 | 9 | 10 |
| 11 | 12 | 13 | 14 | 15 | 16 | 17 |
| 18 | 19 | 20 | 21 | 22 | 23 | 24 |
| 25 | 26 | 27 | 28 | 29 | 30 | 31 |
| | | | | | | |

Autumn term 2024

Term 1

04/09/2024 - 25/10/2024

Half term

28/10/2024 - 01/11/2024

Term 2

04/11/2024 - 20/12/2024

Christmas break

23/12/2024 - 03/01/2025

Spring term 2025

Term 1

07/01/2025 - 14/02/2025

Half term

17/02/2025 - 21/02/2025

Term 2

24/02/2025 - 11/04/2025

Easter break

14/04/2025 - 25/04/2025

Summer term 2025

Term 1

28/04/2025 - 23/05/2025

Half term

26/05/2025 - 30/05/2025

Term 2

02/06/2025 - 18/07/2025

Inset days

Inset 1 - 02/09/2024

Inset 2 - 03/09/2024

Inset 3 - 06/01/2025

Inset 4 - 31/03/2025 twilight

Inset 5 - TBC twilight

Bank holidays Eid days

25/12/2024 31/03/2025

26/12/2024 07/06/2025

01/01/2025

18/04/2025

21/04/2025

05/05/2025

26/05/2025

26/08/2025

SCHOOL NOTICE BOARD



Mr Ali and Aysha (Reception teacher) will be running the Big Half (13.1 miles) on Sunday 1st September 2024. They are fundraising for the **Year 6 residential 2025**. These funds will go towards making the residential cheaper for all families. The sponsorship page for the Big Half is now live. All donations, however big or small or greatly appreciated. You can donate online or in person at the school office. Thank you in advance for your support!

Mr Ali - <https://www.peoplesfundraising.com/fundraising/mark-ali-st-saviours-and-SPSL-big-half-2024>

Aysha - <https://www.peoplesfundraising.com/fundraising/aysha-khanom-hussain-st-pauls-with-st-lukes&tag=>

SCHOOL NOTICE BOARD

FamiliesMatter

Parent and Family Support Service



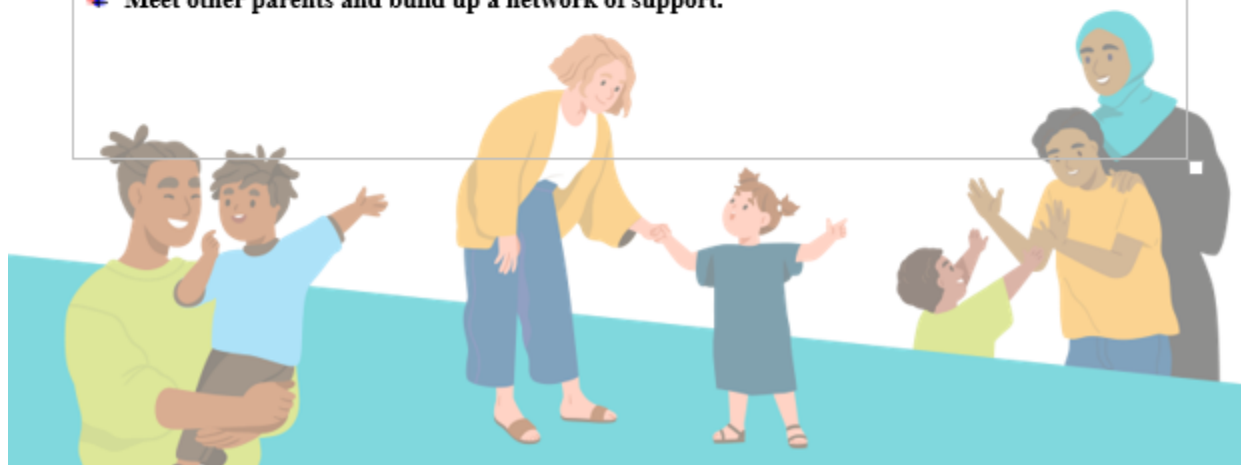
Are you parenting a child with ADHD?

Join our Parent Plus ADHD Post diagnostic 'Children's Programme' and meet other parents of aged 6-12 in a supporting group to help your Child to reach their full potential.

| | |
|----------------------|--|
| Venue: | Parents advice Centre 30 Greatorex St Whitechapel London E1 5NP Tel: 07943825612 |
| Date: | Monday mornings (9 weeks course) Monday 16 th , 23 rd , 30 th September, 7 th , 14 th , 21 st October (half term) 4 th , 11 th , 18 th & 25 th November 10:00am-12:30pm |
| Time: | 10am-12.30pm |
| How to refer: | Self-referrals are accepted - please email: parenting@towerhamlets.gov.uk or call on 020 7364 6398 |

During the course you will:

- ✚ Have a positive understanding of ADHD and their strengths.
- ✚ Learn how to take care of yourself and manage stress.
- ✚ Help your child learn social skills and build friendships.
- ✚ Learn about challenging & strengths of ADHD & managing behaviour.
- ✚ Understand the role of medication and other treatment.
- ✚ Meet other parents and build up a network of support.



SCHOOL NOTICE BOARD



School Social Work (Primary Schools)

Early support for vulnerable children and families

Many schools are already benefiting from having an experienced social worker based within their school to support their most vulnerable students.

A range of support is offered for pre and post statutory work ranging from undertaking preventative work with children and families through to solution focussed targeted intervention with hard-to-reach families.

This includes:

- Providing support to complete Early Help Assessments
- Lead professional for Team around Family meetings
- Undertake direct work with children and families
- Running workshops, home visits and much more...

For further details
of our service
please email:

**Ann.walker@
towerhamlets.gov.uk**



SCHOOL NOTICE BOARD

Hello parents/carers!

My name is Farhana Rohim, I am the school social worker based at the school every Monday's this term (subject to change in new term). My role is to support vulnerable children and their families as part of an early intervention service to prevent families being escalated to statutory social care. If you need any support or would like to speak to me to get more information, please join us. I look forward to meeting you all!

School social worker role and offer:

- Dedicated Social Worker will be based at the school on allocated day to support vulnerable children and their families, to work in partnership with the school, parents and children to alleviate any stress within the family.
- This work will be consent based.
- This is part of the early intervention service to prevent families escalating to statutory social care and improve outcomes for children and their families at Tier 1 & 2.
- Families will be provided support at the earliest opportunity through the school social worker.
- Early Help Assessments (EHA) may be carried out to identify the difficulties and challenges families are experiencing.
- Social worker is able to carry out home visits and see parents. Parents can see social worker in school.
- Direct work will be undertaken with the children at school.
- Attend/lead TAC meetings.
- Families may be signposted to other agencies in the community to ensure that the right support and intervention is in place.
- Social Worker will be available to offer parents appointments to discuss any issues that they are struggling with or offer support and advice around family mediation, bereavement or separation, young carers support, housing, benefits, financial difficulties etc. including support with completing forms.

Kind regards,

Farhana Rohim

School Social Worker

(My working days – Monday 8:30am – 4:30pm)

Early Help & Children and Families Service
Supporting Families Division
London Borough Tower Hamlets
First Floor, Tower Hamlets Town Hall
160 Whitechapel Road
London E1 1BJ

SCHOOL NOTICE BOARD



Idea Store SUMMER FUN!

We've got a jam-packed programme of fantastic, free events for the whole family to enjoy!

WHAT'S ON

THEATRE SHOWS • CRAFTINGS SESSIONS • DRAMA WORKSHOPS
 ZINE MAKING • STORYTELLING • LEGO® BUILD THE CHANGE
 SUMMER READING CHALLENGE & SO MUCH MORE!



Coppice Theatre



Patchlarks Storytelling

We're working with Freshwater Theatre,
 Pakiki Theatre, Momtaz Begum Hossain,
 Coppice Theatre, Patchlarks & LEGO®
 to bring you a SUMMER OF FUN!



Freshwater Theatre



Momtaz Begum Hossain

Discover the full summer activities programme:

ideastore.co.uk/summer

